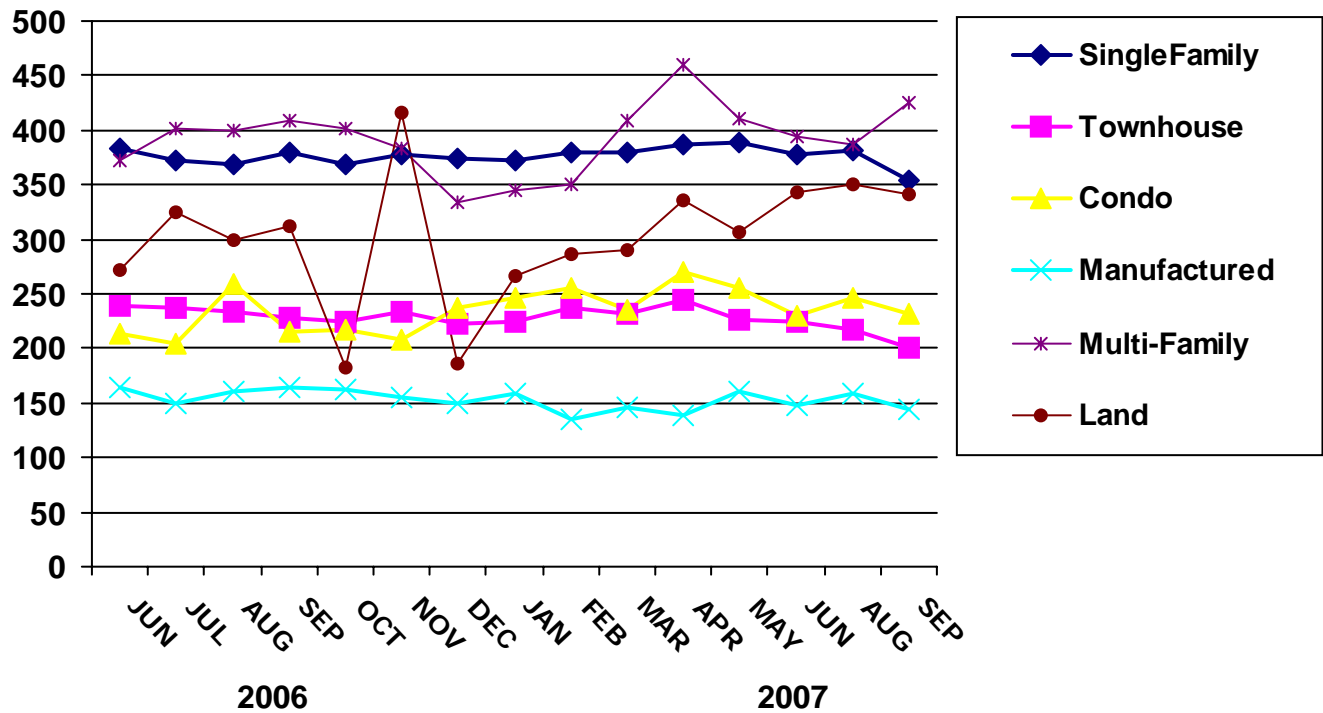




AVERAGE SALE PRICE BY MONTH



PROPERTY TYPE	JAN	FEB	MAR	APR	MAY	JUN	JUL	AUG	SEP	OCT	NOV	DEC
	2005 (in \$1,000's)											
SINGLE-FAMILY	326	333	353	340	352	356	360	365	361	362	361	372
TOWNHOUSE	202	197	215	206	222	226	223	223	228	227	234	226
CONDO	196	182	183	192	194	212	200	219	200	219	234	211
MANUFACTURED	121	119	140	133	138	138	148	170	147	145	169	160
MULTI-FAMILY	333	337	436	372	387	362	607	431	483	393	396	403
LAND	279	297	248	275	268	301	311	257	563	363	309	351
	2006 (in \$1,000's)											
SINGLE-FAMILY	379	376	375	366	372	383	373	368	380	369	378	374
TOWNHOUSE	232	218	235	233	228	239	237	234	229	225	233	224
CONDO	208	211	219	209	212	213	205	260	216	216	208	237
MANUFACTURED	175	155	144	161	168	165	150	161	165	163	154	150
MULTI-FAMILY	408	572	387	346	427	373	402	399	408	401	383	335
LAND	313	301	351	235	308	272	326	299	312	183	416	187
	2007 (in \$1,000's)											
SINGLE-FAMILY	373	379	379	388	389	377	375	381	354	0	0	0
TOWNHOUSE	224	237	233	245	227	224	223	217	200	0	0	0
CONDO	246	256	235	271	255	230	235	246	231	0	0	0
MANUFACTURED	158	135	146	140	160	147	137	158	145	0	0	0
MULTI-FAMILY	345	351	409	459	410	393	387	387	425	0	0	0
LAND	266	287	291	336	307	344	488	350	342	0	0	0

